


The Chartered
Institute of Logistics
and Transport

GLOBAL. SUSTAINABLE. WORLD CHANGING.

LEADING GLOBAL SUSTAINABLE
DEVELOPMENT IN LOGISTICS &
TRANSPORT

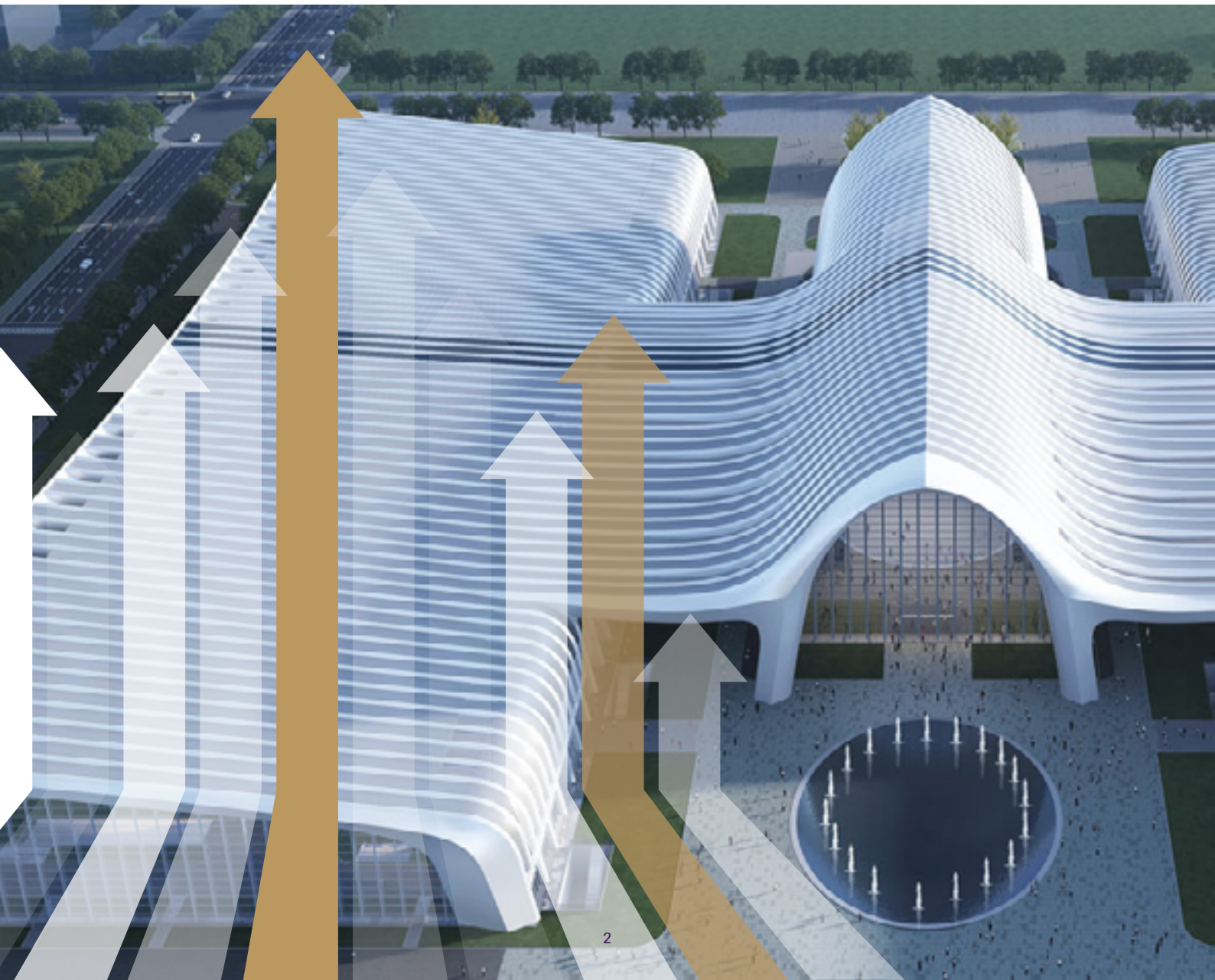
CIILT International Convention 2024
Langfang, China | 16 - 18 June



 **LEARN MORE**

CONTENTS

A message from our International President, Chief Teete OWUSU-NORTEY, FCILT	3
About the International Convention	4
About CILT	4
Visiting Lanfang, China	5
Convention programme	6-7
Speakers	8
Investment	9-10
Hotels	11
Visa notice	12
Registration and contact information	13-17



A MESSAGE FROM OUR INTERNATIONAL PRESIDENT

Dear CILT Community,

It's a privilege to extend a warm invitation to each of you as we gather in Langfang, China in June for our annual International Convention. An important fixture in the global logistics, supply chain and transport calendar, this event serves as a platform for collaboration, innovation and the exchange of ideas among industry leaders, experts and professionals from diverse corners of the globe.

As International President, I am deeply grateful for the opportunity to be a part of this gathering, where we will come together to explore new horizons, address challenges and chart the course for the future of the logistics, supply chain and transport industries.

Let us seize this moment to forge meaningful connections, foster partnerships and drive positive change.

Thank you for your presence and participation in this important endeavor and I look forward to meeting with you all in June.

Kind regards

Chief Teete OWUSU-NORTEY, FCILT

International President

[LinkedIn](#)

E: teete.owusu@ciltinternational.org



ABOUT THE INTERNATIONAL CONVENTION

Our International Convention is one of the most important events in the global logistics, transport and supply chain industries. It is high-level, large-scale, and authoritative. Previous annual conferences have attracted government and industry leaders, industry experts, scholars and well-known entrepreneurs from many countries and regions around the world to gather for collaboration, to strengthen cooperation, explore development paths, and plan for joint development.

Our Convention is not only a benchmark for the development of our global industries, but also an important platform for international exchanges and cooperation. It has received high attention and praise from the international transportation, logistics and supply chain industries.

WHY YOU SHOULD ATTEND

- Gain valuable insights from industry leaders and experts
- Network with peers and potential collaborators from around the world
- Stay updated on the latest trends and developments in global logistics, supply chain and transport
- Discover new insights, tools and solutions to optimise your performance within our ever-changing industries
- Plus much more!

ABOUT CILT

The Chartered Institute of Logistics and Transport (CILT) supports the professionals who plan the roads, drive the trucks, bring in the raw materials, and store the goods safely. We are the leading international voice for supply chain, logistics and transport.

We are the leading professional body for everyone working in the supply chain, logistics and transport. We are a global family representing professionals at all levels in all sectors, dedicated to providing individuals and organisations with access to the tools, knowledge and connections vital to success in the logistics and transport industry. Founded in 1919 with a mission to improve industry practices and nurture talent, the Institute today has grown to encompass more than 36,000 members in over 40 countries around the globe. Through our educational suite, our strong community and our reputation for high standards, we help professionals to develop their careers, maintain their relevance and provide a pathway for access to better jobs.



▶ VISITING LANGFANG, CHINA

URBAN OVERVIEW

Langfang has unique location and obvious geographical and transportation advantages. The city is located in the core hinterland of the “Golden Triangle” of Beijing, Tianjin and Xiongan New Area, it is an important node city of the Beijing-Tianjin-Hebei world-class urban agglomeration and enjoys the reputation of “Pearl on the Beijing-Tianjin Corridor”.

It covers an area of 6429 square kilometers, with a total population of 5.464 million. The main urban area is 40 kilometers away from the core area of Beijing, 60 kilometers away from the core area of Tianjin and 80 kilometers away from Xiongan.

Within one hour’s driving distance, there are three major aviation hubs:

- Beijing Daxing International Airport
- Capital International Airport
- Tianjin Binhai International Airport

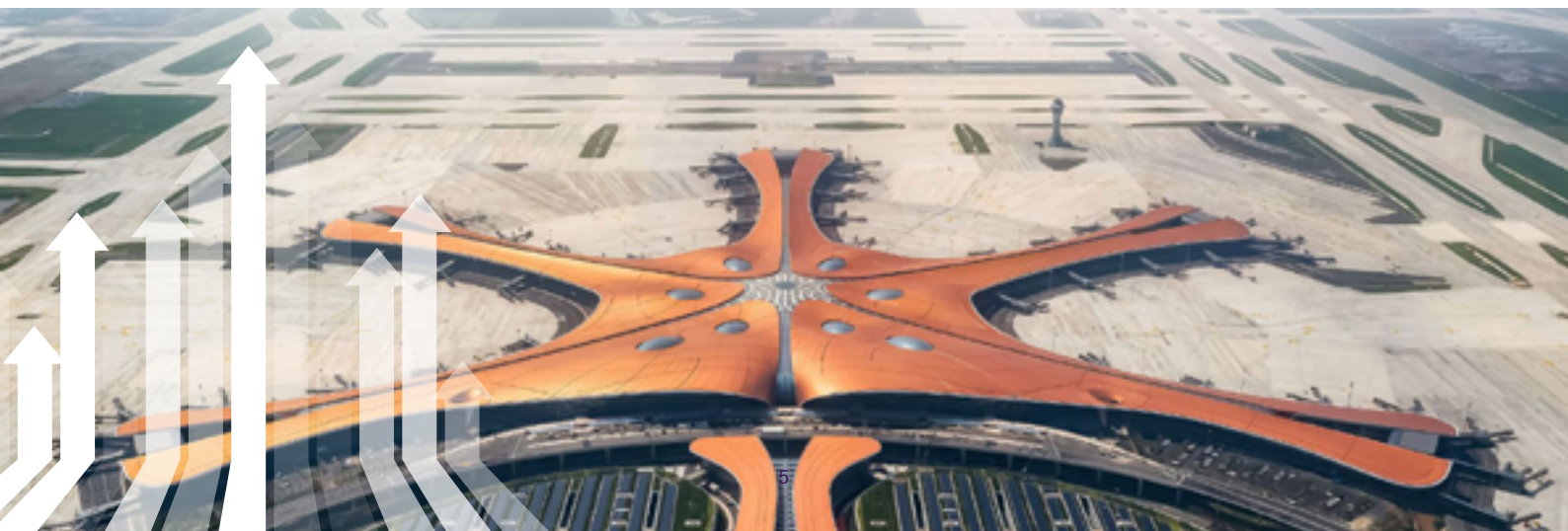
Tianjin Port, the largest seaport in the north. There are 8 trunk railways, 13 expressways and 27 national and provincial trunk roads crisscrossing the territory, and the density of the road network is the highest in the province.

With the accelerated construction of rail transit lines such as S6 and R1, the integrated transportation network with Beijing, Tianjin and Xiongan has basically taken shape, and Langfang on the track is gradually approaching. Especially on February 25, Langfang Central European Land Line was officially opened, achieving zero breakthrough in international railway transportation. The unique geographical location, convenient and accessible transportation system and the huge consumption potential of Beijing-Tianjin-Hebei region have

brought infinite possibilities for the development of the city’s commercial and trade logistics industry.

The city shows its charm and builds an open platform hand in hand. It focuses on building an important node city of the Beijing-Tianjin-Hebei world-class urban agglomeration, comprehensively improve the level of urban planning, construction and management, and continuously enhance the comprehensive carrying capacity. The city have won many national honors, such as the national civilized city, the national forest city, the best financial ecological city in China, the top 20 investment zones in China, and the advanced city of national scientific and technological progress.

Langfang is a city with profound heritage, rich humanities, pioneering and enterprising, a city with overlapping opportunities, full of vitality and unlimited business opportunities, an open and inclusive city with bursting advantages and unlimited potential. Standing at a new historical starting point, the city will cultivate the fertile soil for high-quality industrial development with excellent conditions, preferential policies, superior resources and high-quality services, cultivate the hot land for innovation and entrepreneurship of the vast number of businessmen, and create a paradise for people with lofty ideals to achieve their dreams. We sincerely hope that all guests will give more attention and support to the development of Langfang. We sincerely welcome all entrepreneurs to invest in Langfang and bring new ideas, new models and new formats of high-end industrial development to Langfang. Let’s work together to share this “new blue ocean” and build a win-win future!



CONVENTION PROGRAMME

DAY 0

SATURDAY 15 JUNE

Pre-conference events

Arrival of delegates

14:00 International Management Committee (IMC) meeting

15:30 Council of Trustees (COT) meeting

18:00 Welcome dinner hosted by the Langfang Municipal Government

DAY 1

SUNDAY 16 JUNE

09:00 Opening ceremony of the Langfang Fair for invited guests

14:00 CILT International annual general meeting (AGM) / International Council (IC) meeting

15:30 International delegation meetings

18:00 Dinner followed by the Global WiLAT workshop and the Next Generation (NG) meeting

DAY 2

MONDAY 17 JUNE

09:00 - Opening ceremony of International Convention China 2024

09:20

Address by CILT International President

Chief Teete OWUSU-NORTEY, FCILT

Address by the President of the China Communications and Transportation Association

Mr Hu Yadong

Welcome address

Vice-Governor of Hebei Provincial Government

Opening address

Mayor from Langfang Municipal Government

09:20 - 12:00 Main Forum: High quality development of logistics and transport

International logistics cooperation and development in the contest of the Belt and Road initiative

Representative of the Minister of National Development and Reform Committee

Development of international economics and trade and logistics

TBC

Cross border logistics, import and export customs

TBC

International transport industries market update and development trend

TBC

Global trade and international logistics

TBC

Launching ceremony

Global top 50 logistics ranking report

Chief Teete OWUSU-NORTEY, FCILT President of CILT International

Langfang declaration

Mr Hu Yadong, President of China Communications & Transportation Association

CONVENTION PROGRAMME

DAY 2

MONDAY 17 JUNE CONT'D

Lunch

14:00 - Afternoon parallel panel sessions

18:00 Forum - International trade and logistics cooperation

Meeting - CILT education and training

18:00 President's dinner

DAY 3

TUESDAY 18 JUNE

TRACK 1

**09:00 - Diversity and sustainable
12:00 development**

Next Generation meeting
- Innovative technologies
driving logistics and transport
efficiency

Lunch

**Site visits - delegates to select one of the following
options**

14:00 - Xiong'an new area

18:00 Logistics and supply chain companies

Daxing International Airport Economic Zone

Exhibition

- International smart logistics scene
- National modern trade logistics important base scene

Dinner

Close of conference

TRACK 2

WiLAT Global Council Meeting

WiLAT Steering Committee
Meeting

TRACK 3

Forum - International supply
chain education cooperation 1

Forum - International supply
chain education cooperation 2

WEDNESDAY 19 JUNE

Optional post-conference visits

- Domestic and foreign trade integration import and export commodities exhibition
- Meng Langfang International Drama Park (A theme park modelled after a famous Chinese classic novel - A Dream of Red Mansions)

➔ SPEAKERS A-Z

Dr Dorothy T F CHAN FCILT, Former Deputy Commissioner for Transport of the HKSAR Government, Deputy Director, School of Professional and Continuing Education, The University of Hong Kong

Wang ENSEN FCILT, President of CILT China

Li GANG FCILT, Vice President and Secretary General of China Communications & Transportation Association

Ir Dr Leung KAI-YUEN KELVIN FCILT, President of CILT Hong Kong

Vicky KOO FCILT, Chairperson of WiLAT Global, Advisor of CILT Trustee

Catherine LOU FCILT, WCBC, GVP, Associate Professor in Supply Chain and Logistics Management at Victoria University

Mr Michael LUGUJE – Director General of the Ghana Ports and Harbours Authority

Dr Venus LUN, CILT IVP (East Asia), Special Project Director of Logistics & Supply Chain Multi Tech R&D Centre

Chief Teete OWUSU-NORTEY FCILT, President of CILT International

Bruce SHEN, Senior Vice President , Head of North District of DHL Global Forwarding (China) Co., Ltd

Usman SHUAIBU CMILT, Deputy Chairperson of CILT Next Generation

Karmjit SINGH FCILT, Chairman of CILT Singapore

Mrs Mfon USORO FCILT, President of CILT Nigeria

WU Yabin, Director of UNIDO Investment and Technology Promotion Office

Hu YADONG, President of China Communications and Transportation Association

Prof Huang YOUFANG FCILT, Head of China Institute of FTZ Supply Chain

Liu YUAN, Mayor of Langfang Municipal Government



INVESTMENT

DESCRIPTION OF CONFERENCE FEES

The conference fee for the International Convention 2024 includes the registration fee, accommodation, transport to and from airport, breakfast, lunch and dinner during the conference. The rate for accompanying families who are not participating the conference include accommodation, transport to and from airport, breakfast, lunch and dinner. The details are as follows:

- 1. The Registration Fee:** including the designated airport pick-up and drop-off during the conference, the round-trip transport to and from the venue and visit, conference materials, breakfast, lunch and dinner during the conference.
- 2. Accommodation Fee:** the organising committee will book rooms for the delegates and accompanying family, the fee is only includes the number of days of participation + 1 night's accommodation. For example, 2 nights' accommodation reservation for 1 day's participation, 3 nights' accommodation reservation for 2 days' participation, and so on. The standard room arrangement is one room for one person. Two participants who choose to share a room will receive a discount of USD30 (CNY200) per night.
- 3. Accompanying family members fees:** Including the cost of pick-up and drop-off at designated airports, hotel accommodation, breakfast, lunch and dinner.
- 4. Tour Fee:** includes admission ticket, meals, transportation, tour guide, interpreter and gratuity for the one-day tour on 19 June, as well as one day's accommodation.



PRICING

All fees are per delegate and prices are in CNY or USD. Two participants who choose to share a room will receive a discount of USD30 (CNY200) per night.

MEMBER				
Category	Early bird (closes on 30 April 2024)		Standard (valid 1 May - 15 June 2024)	
	CNY	USD	CNY	USD
Full	9,000	1,290	9,500	1,360
Day 1	4,000	570	4,300	615
Day 2 or 3	4,500	645	4,800	690
Day 1 and 2	6,800	970	7,200	1,030
Day 2 and 3	7,200	1,030	7,600	1,090
NON-MEMBER				
Category	Early bird (closes on 30 April 2024)		Standard (valid 1 May - 15 June 2024)	
	CNY	USD	CNY	USD
Full	9,500	1,360	10,000	1,430
Day 1	4,300	615	4,500	645
Day 2 or 3	4,800	690	5,000	720
Day 1 and 2	7,200	1,030	7,500	1,075
Day 2 and 3	7,600	1,090	8,000	1,150
WILAT/NEXT GENERATION				
Category	Early bird (closes on 30 April 2024)		Standard (valid 1 May - 15 June 2024)	
	CNY	USD	CNY	USD
Full	8,000	1,150	8,500	1,220
Day 1	3,600	520	3,800	550
Day 2 or 3	4,000	570	4,200	600
Day 1 and 2	6,000	860	6,400	920
Day 2 and 3	6,400	920	6,700	965
ACCOMPANYING FAMILY (NOT PARTICIPATING IN CONFERENCE ACTIVITIES)				
Category	Early bird (closes on 30 April 2024)		Standard (valid 1 May - 15 June 2024)	
	CNY	USD	CNY	USD
One day	2,800	400	3,000	430
Two days	3,800	550	4,000	570
Three days	4,800	690	5,000	720
OPTIONAL TOUR 19TH JUNE				
Category	CNY		USD	
Tour	2,000		290	

HOTEL ACCOMMODATION

Accommodation during the conference is arranged and provided by the organising committee for all delegates. Please indicate the type of room you require on the registration form. Rooms will be reserved in advance for delegates who have completed their payment and submitted the payment receipt.

Room reservations are on a first-come, first-served basis. If the room type you selected when submitting registration is fully booked, we will discuss with you and arrange other types of rooms for you.

Accommodation is included in the conference fee and delegates do not need to pay for their own hotel accommodation.

By default, hotel reservation is based on the number of days attended + 1 night's accommodation (for example: 2 nights' accommodation for 1 day's attendance, 3 nights' accommodation for 2 days' attendance, and so on)

Delegates who require accommodation in addition to the number of days listed above may make a separate note when they submit the registration or contact ciltchina@126.com, The additional fee will be chargeable against delegate's request.

ROOM TYPES

There are two room types for delegates to choose from:

- King Room (2m*2m king size bed)
- Twin Room (including two 1.35m*2m single beds)

ROOM SHARING POLICY

Due to the limited availability of hotel rooms, delegates are encouraged to make a joint reservation and share a room by two.

Delegates who are sharing a room are kindly requested to identify their roommate and indicate the name of the roommate when completing the registration form. Delegates sharing a room are required to submit their payment receipt together to secure the room reservation.

Hotel check-in time is after 12:00 noon, check-out time is before 12:00 noon (all Beijing time).

Airport greeting and transfer service and local transfers to visiting sites will be arranged during the conference. We will update the information on the website as the hotel information is further clarified. If you have any further questions, please contact the CILT China at ciltchina@126.com.



VISA NOTICE

PLEASE CHECK

1. Prior to your travelling, please check the visa requirements whether entry visa is needed for China; and whether a visa is needed for your transit flight to another country.
2. Based on the various types of visa issues we have encountered in recent years; the organising committee would like to urge all international delegates to consider visa applications as soon as possible. It is recommended that visa application should be made at least two months in advance.
3. As the requirements of the Chinese embassies in each country are different, we recommend international delegates to contact their local Chinese embassy/consulate/visa centre in advance to obtain the latest local Chinese visa application requirements. CILT China will provide the necessary assistance upon request.
4. Maintain close contact with the visa issuing authority to identify early indication of problematic cases as they may affect the visa approval of a whole batch of applications.
5. All visitors requiring a visa will receive joint invitation from the following authorities: CILT China, China Communications and Transportation Association (CCTA).

The organising committee will provide letters of invitation to support visa applications to delegates who provide the following information to ciltchina@126.com.

- Full name on passport
- Title
- Employer and job title
- Passport number
- Date of birth
- Scanned copy of passport information page
- Email address
- Residential address
- The name and contact information of the local Chinese embassy/consulate/visa centre (as some countries may have more than one embassy/consulate/visa center, representatives must provide this information)



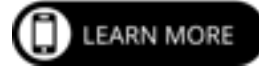
REGISTRATION AND CONTACT

For further Convention information and support, please contact CILT China using the information below.

REGISTRATION

Early bird registration closes on 30 April and standard registration closes on 31 May. Secure your place today to be part of our dynamic event. We look forward to welcoming you to China for an enriching and productive experience.

Please scan the QR code to be directed to our registration page. You will need to 'Create an Account' in order to complete your registration.



CONTACT

WECHAT FOR INTERNATIONAL DELEGATES

CILT International Convention Delegate Group Chat

In order to facilitate overseas delegates coming to China to receive relevant news of the convention in time, communicate with the conference staff smoothly, and have a better conference experience, we recommend that the delegates download and register WeChat, a commonly used social chat software in China, on your mobile phones, become WeChat friends with CILT China. You can also join the Chat Group of ICM 2024, network with CILT members from all over the world, interact with each other and progress together.

Scan the QR code to join the Convention chat for delegates.



What is WeChat?

WeChat is a free chat app for smartphones that offers free video and voice calls, videos, photos, games, stickers, and text messages to help you stay connected with the people who matter to you most.

Download and Install

You can download WeChat by visiting wechat.com, then selecting your device's platform for proper installation. You can also download the app from your device's official app store.

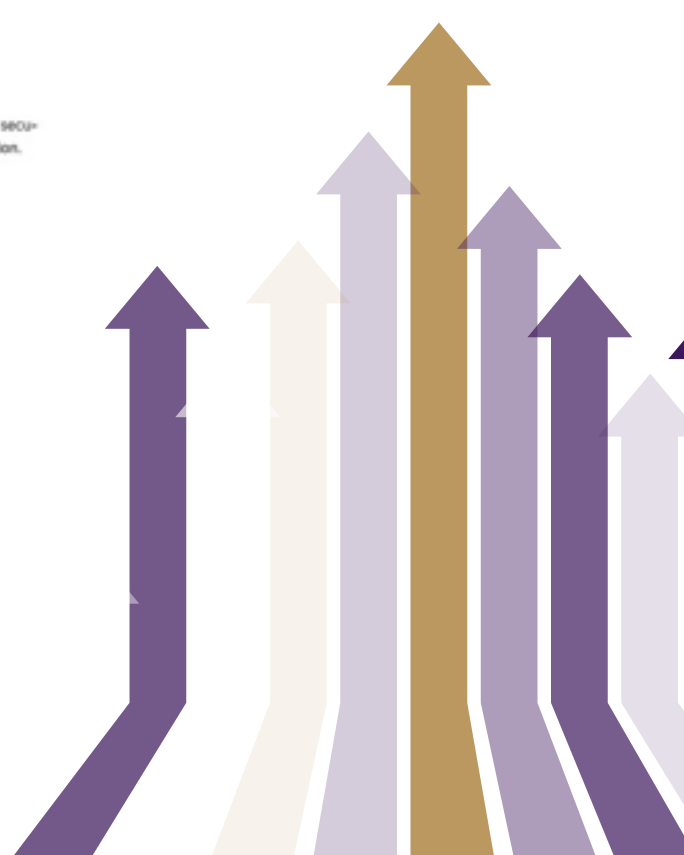
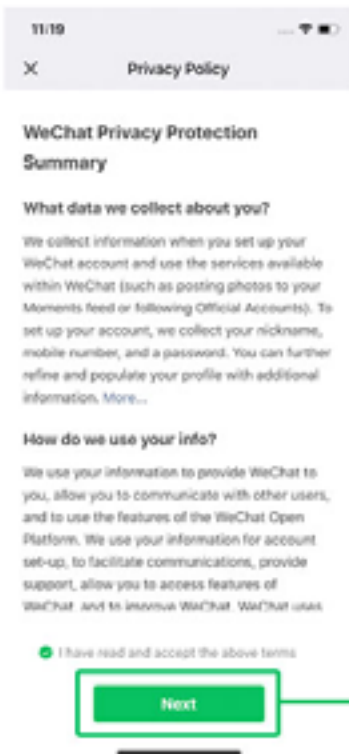
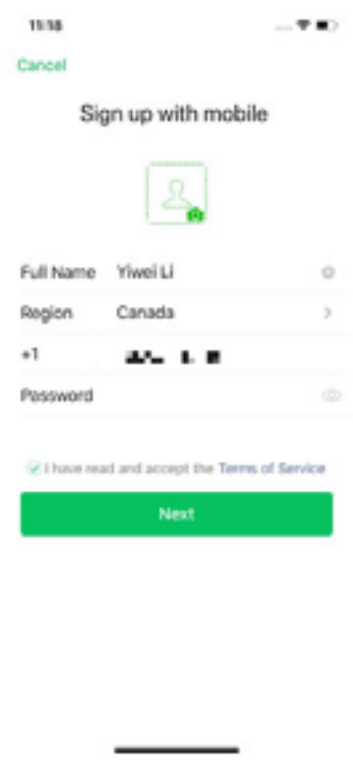
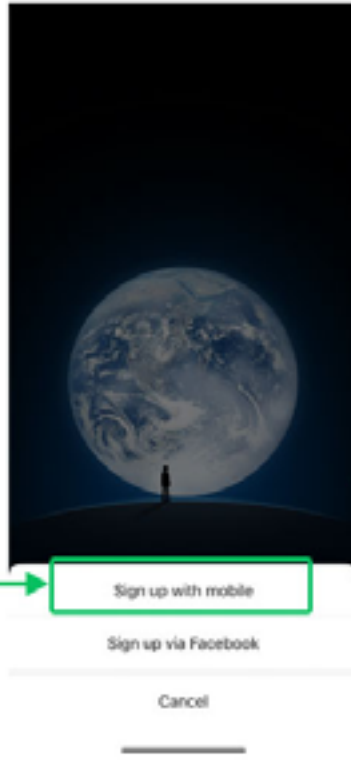
Sign Up

After downloading and installing WeChat on your mobile phone, you can sign up for WeChat with the following ways:



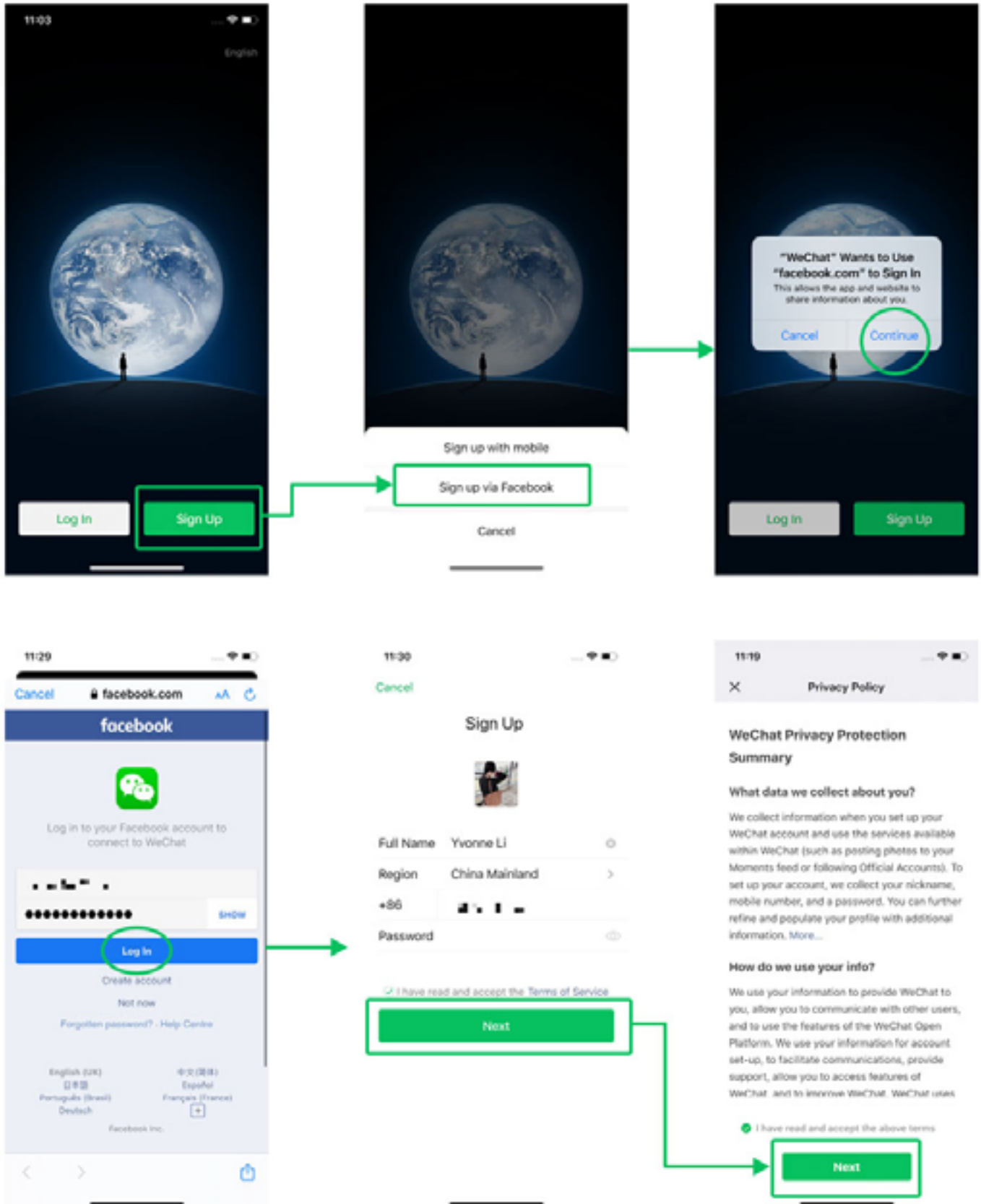
➔ SIGN UP WITH MOBILE

Open the WeChat app and tap Sign Up > Sign up with mobile > choose your region code, enter your mobile, and set a password.



➔ SIGN UP VIA FACEBOOK

Open the WeChat app and tap Sign Up > Sign up via Facebook, and then WeChat will redirect to Facebook to request permission to log in to WeChat. Then, choose your region code, enter your mobile, and set a password.



NOTES:

1. One mobile phone number can only be used for creating one WeChat account.
2. If you are required to have another WeChat user help you register for WeChat by scanning a QR Code, tap here to learn more.
3. Password must be 8-16 characters and contain both numbers and letters/special characters.

Set your WeChat ID

Login WeChat > Me > tap your profile photo > tap WeChat ID to view or set a WeChat ID.

Notes:

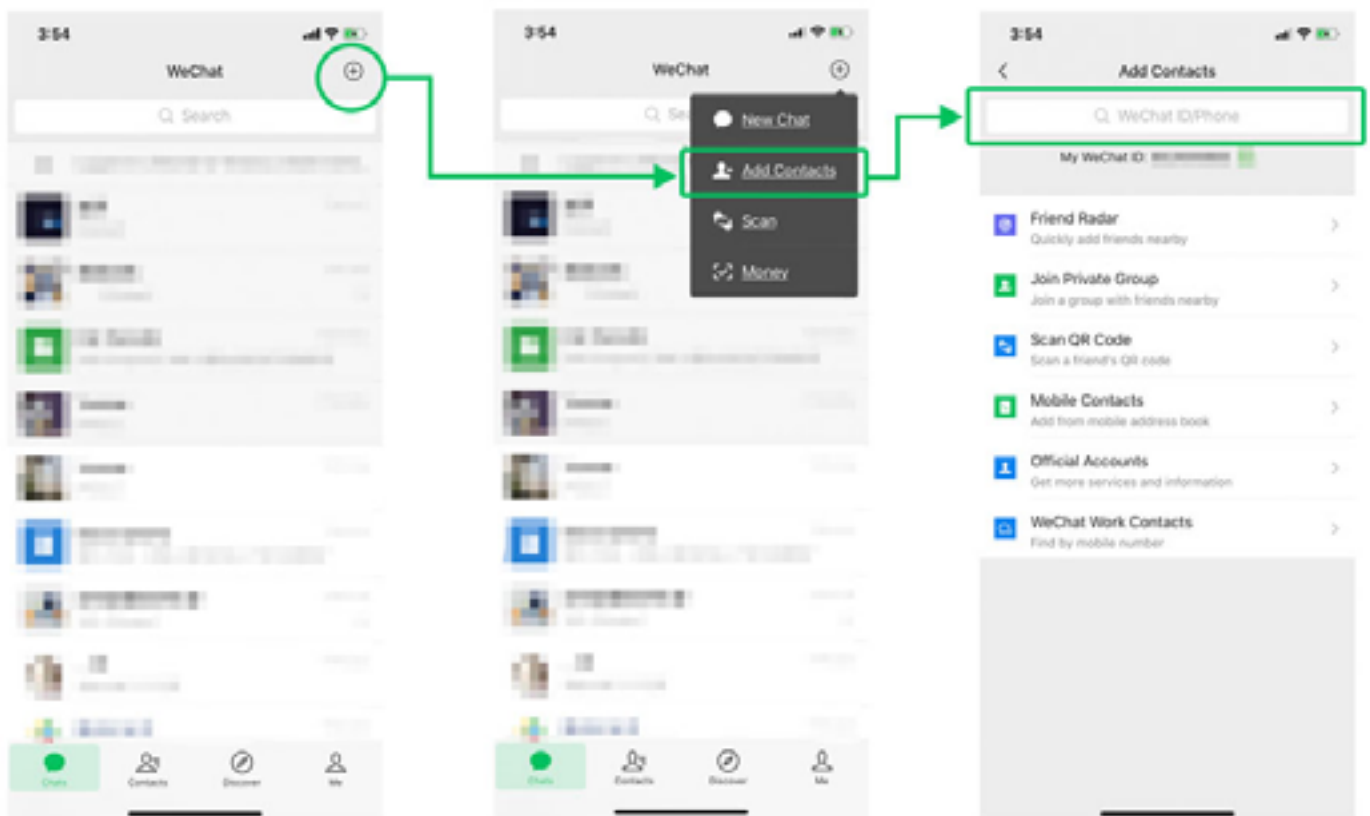
1. WeChat ID must be between 6 to 20 characters and shouldn't include your name, birthday, or other personal information.
2. WeChat ID only can be changed once per year.

How do I add WeChat friends?

Enter WeChat > tap + in the top right corner > Add Contacts, then you can add friends to WeChat via the following ways:

1. Search by your friend's WeChat ID or phone number. The WeChat ID of CILT China is gyt18911529856.
2. Add by scanning QR Code. You can scan the QR code of your friends and CILT China to add us instantly!

Here is the QR code of CILT China, please scan and add us.

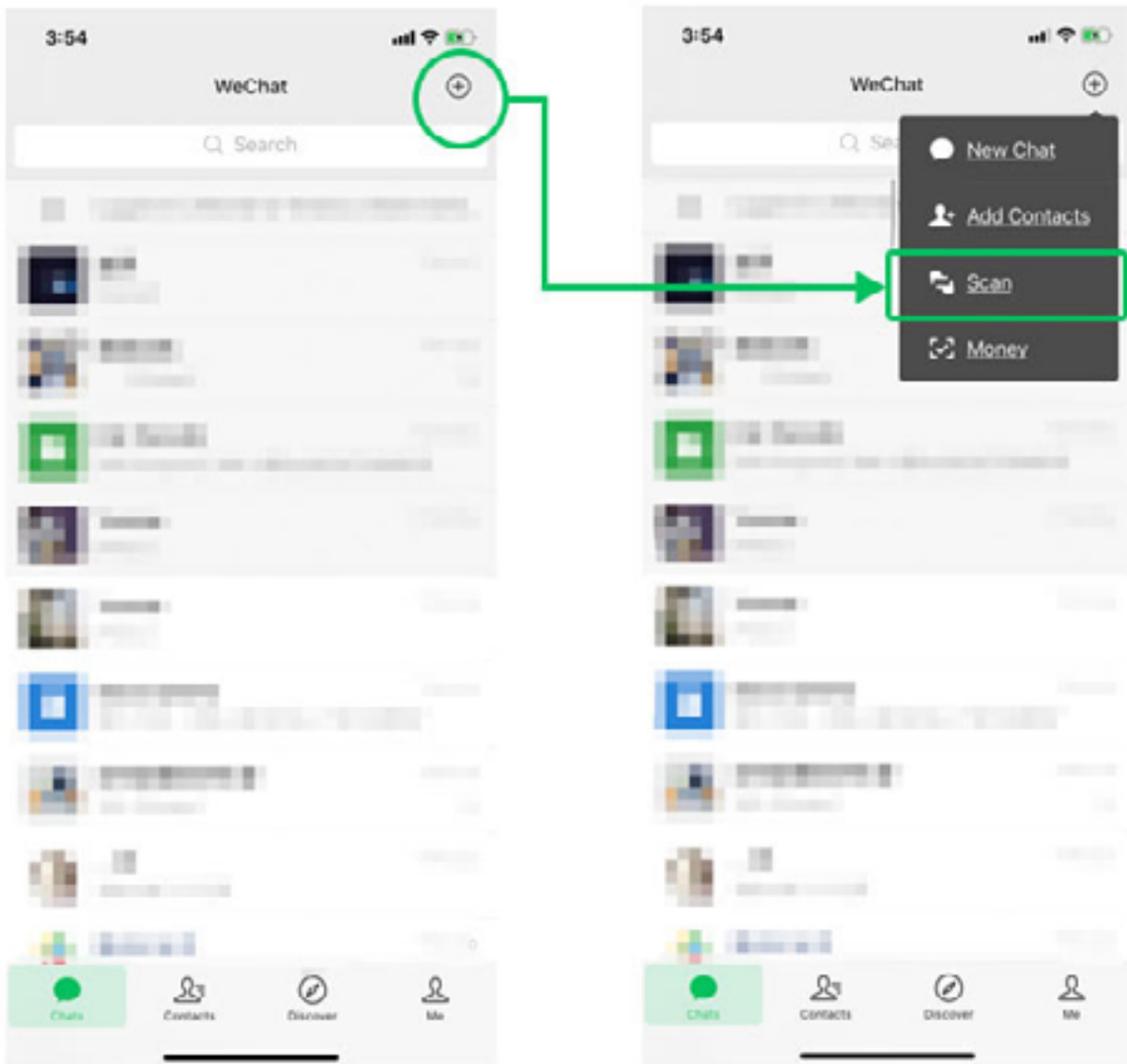


JOIN THE WECHAT GROUP OF ICM 2024

When you add CILT China as your WeChat friend, we will invite you join the chat group of ICM 2024.

Now, you have successfully registered WeChat and can start using it. You can send text messages, voice messages, pictures and videos to your friends, and join group chats and official accounts to communicate with more people.

If you encounter any problems with your WeChat account, such as being unable to log in, account being blocked, etc., you can go to the www.wechat.com to seek help from the official help center.





The Chartered
Institute of Logistics
and Transport

GLOBAL. SUSTAINABLE. WORLD CHANGING.

CONTACT:

CILT CHINA

B-603

315 GUANGANMENNEI STREET


XICHENG DISTRICT

BEIJING

T: +853 6298 2816

E: IC2024@CILT.MO



 LEARN MORE